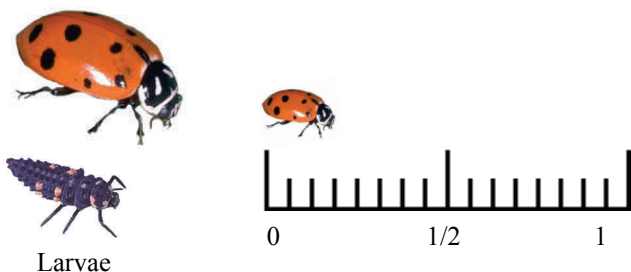


Beneficial Insects

Lady Beetle



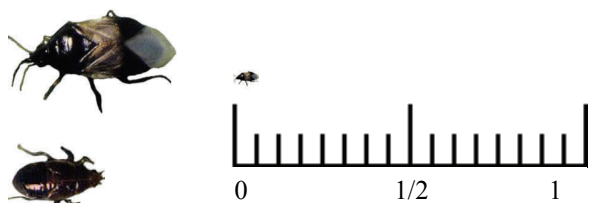
Prominent Identifying Feature :

Alligator like larva with Orange spots on black body
Adults Orange with black spots

Predator of : Aphids, spider mites, small insects.

Adults and larvae are very good predators of Aphids. One larva can eat 300-400 aphids during its development, Adults as many as 4000 - 5000 aphids in its life time. Lady Beetles have a high reproductive rate and can lay from 500-1000 eggs in its lifecycle

Minute Pirate Bug

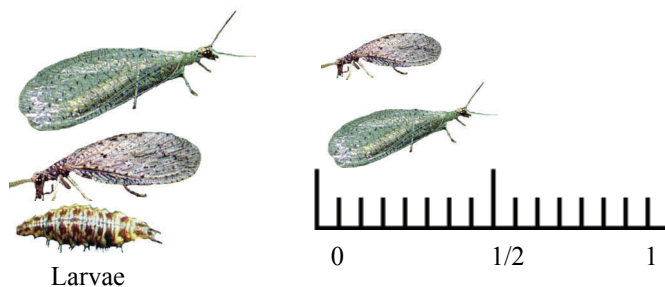


Prominent Identifying Features:

Adults are very small with black and white checkered pattern on black

Predator of: Thrips, spider mites small aphids, eggs, and caterpillars.

Lacewing (Green & Brown)



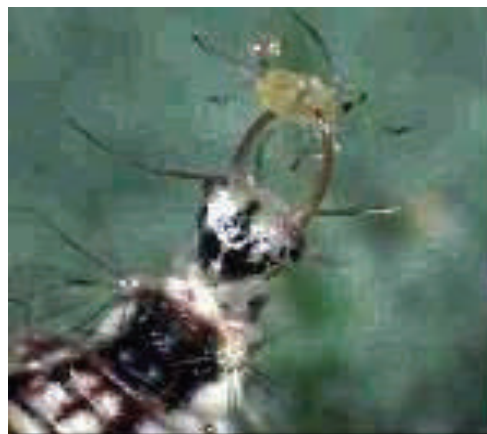
Prominent Identifying Features:

Transparent lace-like vertical wings on adult, (Green or Brown)

Alligator like larva with light tan body with prominent pinchers in front of head

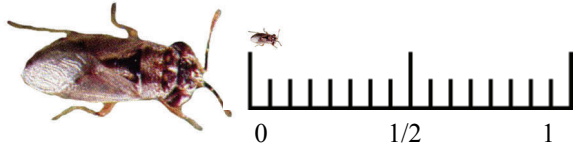
Predator of : Aphids, Spider mites and a variety of small insects and eggs.

Adult lacewings feed mainly on pollen, Nectar, and honeydew while the larvae feed primarily on other insects. Lacewing larvae consume large numbers of harmful alfalfa insects, and eggs.



Lacewing larva eating Aphid

Big Eyed Bug

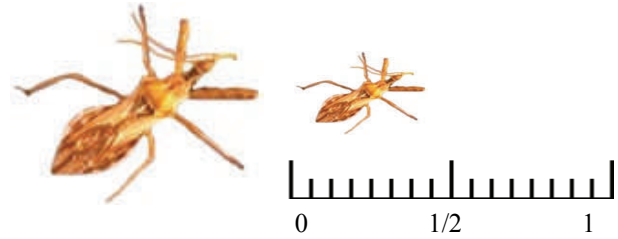


Prominent Identifying Features:

Large eyes in relation to rest of body

Predator of: Spider mites, aphids and insect eggs. Big Eyed bug nymphs can eat as many as 1400-1600 Spider mites during its development. Adults can eat 80 mites per day, as well as some lygus eggs.

Assassin Bug



Prominent Identifying Features:

Larger predator (1/2" to 3/4" with large forelegs and narrow head.

Predator of: Lygus, Aphids, leaf hoppers, caterpillars, and small insects.

**For Additional
Information
Contact our Staff at**



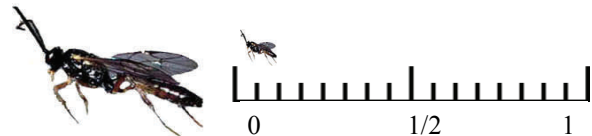
Donald R. Miller Ph.D. (Idaho)
Director of Product Development
Cell: 208-250-0376

Sales

Tom Miles (Idaho)
Cell: 208-250-3402

Gene Lind (Illinois)
Business Phone: 815-875-4330
Cell: 815-878-0546

Parasitic Wasps



Prominent Identifying Features:

Very small flying wasps

Numerous types of parasitic wasps occur in alfalfa fields. The Following 3 parasitic wasps often occur in alfalfa fields

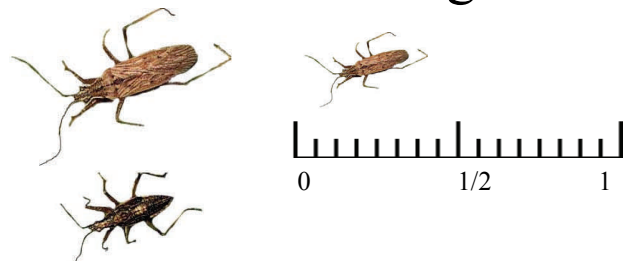
Apanteles (1/8") Feeds on Alfalfa Caterpillar

Aphidius (3/16") Feeds on Aphids

Hyposoter (1/4") Feeds on Army worms

All the above parasitic wasps inject their eggs inside the prey and the developing internal larva eventually kill the host.

Damsel Bugs



Prominent Identifying Features:

Grey to light brown, slender insect, similar in appearance to assassin but smaller (1/2")

Predator of: Lygus, aphids, leaf hoppers, caterpillars, and small insects.

Excellent predator of harmful alfalfa insects. Its moderately large size and speed allows it to prey on numerous types of insects including harmful seed insects such as lygus.