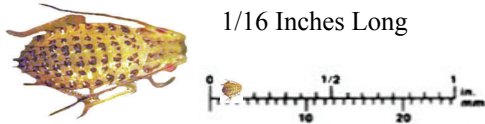




1-866-400-6434

<http://www.targetseed.com>

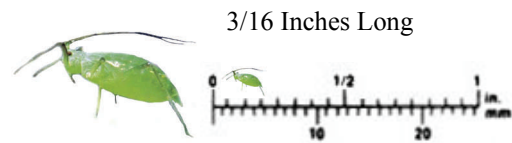
Alfalfa Hay Pests



1/16 Inches Long

Spotted Alfalfa Aphid

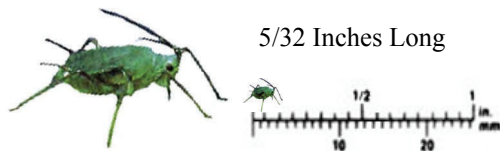
- DESCRIPTION:**
 - Yellow green with rows of black spots on back
- PEAK PERIOD:**
 - Summer months, prefers warm temp.
- Plant Damage:**
 - Stunting & Yellowing
 - Yellowing of leaf veins
 - 1-3 aphids can kill seedlings
 - Most damage due to insect toxin
 - Prefer to feed on lower portion of plant
- Control**
 - Resistant varieties or insecticides



3/16 Inches Long

Green Pea Aphid

- DESCRIPTION:**
 - Green Color
 - Antennae has dark bands on end of segments
- PEAK PERIOD:**
 - Late spring or fall
 - Prefers mild Temperatures
- Plant Damage:**
 - Feeds on all parts of plants
 - Minor damage due to absence of toxin
- Control:**
 - Resistant varieties or insecticides



5/32 Inches Long

Blue Alfalfa Aphid

- DESCRIPTION:**
 - Blue Green Color
 - 3rd Antennae segment uniformly dark
- PEAK PERIOD:**
 - Late winter or early spring
 - Prefers mild Temperatures
- Plant Damage:**
 - prefers to feed on terminal leaves or new re-growth
 - Injects mild toxin resulting in plant stunting
- Control:**
 - Resistant varieties or insecticides



Adult 1/4 inches Long

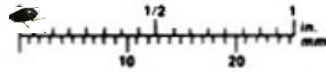
Larva 1/16 inches Long

Alfalfa Weevil

- DESCRIPTION:**
 - Adult light Brown with dark brownstrips on back
 - Larva green with Black Shiny head
- PEAK PERIOD:**
 - Larva emerge in early spring
- Plant Damage:**
 - Feeds on crown buds and/or topgrowth. May severely stunt or damage plant
- Control:**
 - No Resistant Varieties
 - Insecticides or harvesting crop most effective



Approx. 1/16 inches long



Cowpea Aphid

DESCRIPTION:

- Shiny black
- Relatively small aphid, less than (1/16 in) 2 mm long.
- The first half of the antennae is white, and the legs are usually a creamy white color with blackish tips.
- Nymphs are slate gray; the appendages are whitish with blackish tips.

PEAK PERIOD:

- This Aphid was known as a warm weather pest is now found damaging alfalfa in the cooler parts of the year, it is suspected that it is a new biotype.

PLANT DAMAGE:

- The cowpea produces a considerable amount of honeydew which sooty mold grows. The honeydew also makes the alfalfa sticky, which causes problems with harvest.
- This Aphid is known to transmit nearly 30 virus strains.
- In alfalfa, the cowpea prefer to feed on young terminal growth, it can be found infesting leaves, blooms, and stems.
- Damage symptoms include yellowing, wilting, and dieback.
- It can seriously damage Plants by direct insect feeding or by the transmission of virus diseases.

CONTROL

- Resistant varieties or insecticides

**For Additional Information
Contact our Sales Staff at**

Target Alfalfa

Donald R. Miller Ph.D. (Idaho)
Director of Product Development
Business Phone: 208-722-5188
Cell: 208-250-0376



Adults 3/16 Inches Long



Larva 1/10 Inches Long

Clover Root Curculio

DESCRIPTION:

- Adult 2/3 size of alfalfa weevil with less prominent stripe on back
- Larva—White larva found in soil

PEAK PERIOD:

- Overwinters as adults and lay eggs in spring.
Larva begin feeding

Plant Damage:

- Larva feed on bark of root providing on plant roots in late spring and early summer (Entry wound for diseases)

Control:

- No resistant Varieties are available
- Larva feeding on roots may predispose plant to root disease
- Varieties with strong root disease package may persist longer in field
- High soil moisture may lessen larva activity

Sales

Tom Miles (Idaho)

Cell: 208-250-3402

Gene Lind (Illinois)

Business Phone: 815-875-4330

Cell: 815-878-0546