



1-866-400-6434

<http://www.targetseed.com>

Alfalfa Aphids



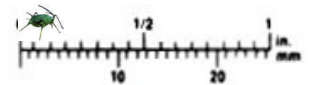
1/16 inches long

SAA



5/32 inches long

BAA



Spotted Alfalfa Aphid

- DESCRIPTION:**
 - Yellow green with rows of black spots on back
- PEAK PERIOD:**
 - Summer months, prefers warm temperatures
- Plant Damage:**
 - Stunting & Yellowing
 - Yellowing of leaf veins
 - 1-3 aphids can kill seedlings
 - Most damage due to insect toxin
 - Prefer to feed on lower portion of plant
- Control**
 - Resistant varieties or insecticides

Blue Alfalfa Aphid

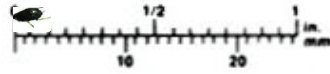
- DESCRIPTION:**
 - Blue Green Color
 - 3rd Antennae segment uniformly dark
- PEAK PERIOD:**
 - Late winter or early spring
 - Prefers mild temperatures
- Plant Damage:**
 - prefers to feed on terminal leaves or new re-growth
 - Injects mild toxin resulting in plant stunting
- Control:**
 - Resistant varieties or insecticides



Common names:

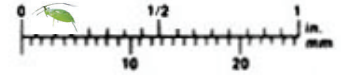
Blackeye bean , blackeye pea , Black-eyed pea, crowder pea , and southern pea

1/16 inch long



3/16 inches long

GPA



Cowpea Aphid

DESCRIPTION:

- Shiny black
- Relatively small aphid, less than (1/16 in) 2 mm long.
- The first half of the antennae is white, and the legs are usually a creamy white color with blackish tips.
- Nymphs are slate gray; the appendages are whitish with blackish tips.

PEAK PERIOD:

- This Aphid was known as a warm weather pest is now found damaging alfalfa in the cooler parts of the year, it is suspected that it is a new biotype.

PLANT DAMAGE:

- The cowpea produces a considerable amount of honey-dew which sooty mold grows. The honeydew also makes the alfalfa sticky, which causes problems with harvest.
- This Aphid is known to transmit nearly 30 virus strains.
- In alfalfa, the cowpea prefer to feed on young terminal growth, it can be found infesting leaves, blooms, and stems.
- Damage symptoms include yellowing, wilting, and die-back.
- It can seriously damage Plants by direct insect feeding or by the transmission of virus diseases.

CONTROL

- Resistant varieties or insecticides

Green Pea Aphid

DESCRIPTION:

- Green Color
- Antennae has dark bands on end of segments

PEAK PERIOD:

- Late spring or fall
- Prefers mild Temperatures

Plant Damage:

- Feeds on all parts of plants
- Minor damage due to absence of toxin

Control:

- Resistant varieties or insecticides

Sales

**For Additional Information
Contact our Sales Staff at**

Target Alfalfa

Donald R. Miller Ph.D. (Idaho)
Director of Product Development
Cell: 208-250-0376

Tom Miles (Idaho)
Cell: 208-250-3402

Gene Lind (Illinois)
Business Phone: 815-875-4330
Cell: 815-878-0546